

# FIERCE

I M M O



## Appartement 1 chambre neuf

Rue du Pavillon 45 8, 1030 Schaerbeek

# FIERCE

I M M O

<b>référence</b>	6549377
<b>Prix</b>	€ 249.000
<b>Superficie terrain</b>	450m <sup>2</sup>
<b>surface habitable</b>	67m <sup>2</sup>
<b>Surface de la terrasse</b>	5m <sup>2</sup>
<b>Chambres</b>	1
<b>Salles de bain</b>	1

## Description

Fierce Immo is proud to exclusively market Ydilles, an exceptional new development in the heart of Schaerbeek! This human-scale project will comprise 4 apartments, ranging from 1-bedroom to 3-bedroom, as well as two 3-bedroom houses.

Nestled in a friendly neighborhood, it offers all the necessary amenities: proximity to the Docks, Schaerbeek train station, schools, parks and much more!

Every detail has been meticulously selected by the developer to guarantee the sustainability of the project over time, complying with the latest environmental standards and offering everyday comfort. You'll also have the opportunity to personalize your apartment as you wish (tiled floors, semi-massive parquet, super-equipped kitchen, etc.).

After a long day, relax in the landscaped courtyard, with its shared vegetable garden.

The sale is subject to registration fees and VAT for the apartments, and VAT for the houses. Contact us now for a personalized project presentation on 02 / 420 65 01.

# FIERCE

I M M O

## Principales informations

<b>référence</b>	6549377
<b>Type</b>	Appartement
<b>Superficie terrain</b>	450m <sup>2</sup>
<b>surface habitable</b>	67m <sup>2</sup>
<b>Surface de la terrasse</b>	5m <sup>2</sup>
<b>Année de construction</b>	2023
<b>Disponibilité</b>	à l'acte
<b>Ascenseur</b>	Oui

## Renseignements

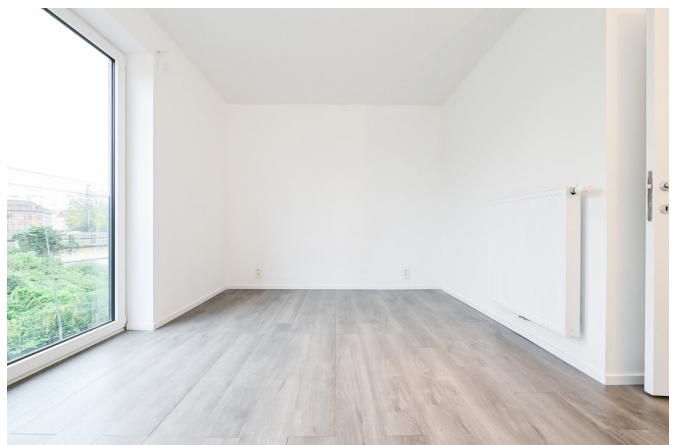
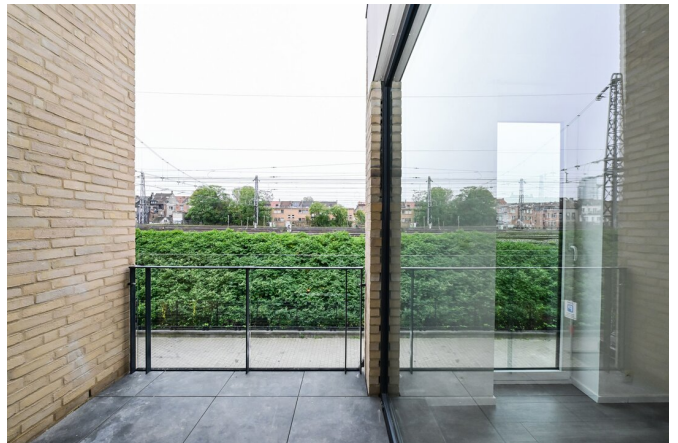
<b>Label PEB</b>	38
<b>Label PEB</b>	A
<b>Destination à l'urbanisme</b>	Inconnu
<b>Permis d'urbanisme</b>	Oui
<b>Permis de lotir</b>	Oui
<b>Convocation</b>	Non
<b>Décision de justice</b>	Non
<b>Droit de vendre</b>	Inconnu
<b>Rez-de-Chaussée</b>	pas situé en zone inondable

## disposition

**Toilettes** 1

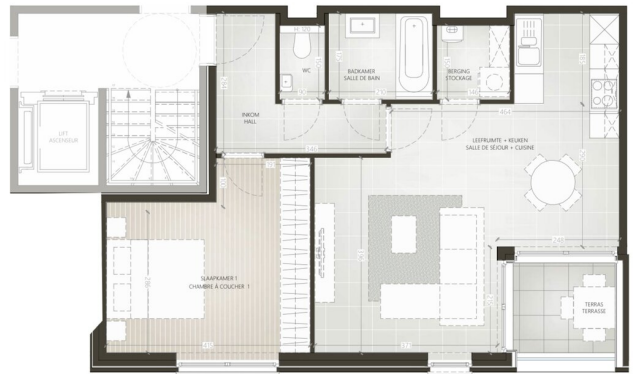
# FIERCE

I M M O



# FIERCE

I M M O



# FIERCE

I M M O

## Intéressé par ce projet ?

contactez-nous pour plus d'informations



### Michaël Baert

Agent immobilier | Responsable projets neufs - IPI  
512.639

- T. +32 472 46 93 44
- E. [michael@fierceimmo.com](mailto:michael@fierceimmo.com)

# FIERCE

I M M O