



## Botanique 47 - magnificent penthouse, exceptional renovation

chaussée de Haecht 47, 1210 Saint-Josse-ten-Noode

<b>Reference</b>	6626144
<b>Price</b>	€ 575.000
<b>Ground surface</b>	324m <sup>2</sup>
<b>Living surface</b>	94m <sup>2</sup>
<b>Terrace surface</b>	23m <sup>2</sup>
<b>Bedrooms</b>	2
<b>Bathrooms</b>	2

## Description

Fierce Immo is proud to offer this magnificent 94 sqm. penthouse with 23 sqm. terrace, located in a completely renovated Brussels Mansion.

The property comprises an entrance hall with checkroom and separate toilet, a beautiful living area with access to the terrace inside the island, a superbly equipped kitchen, 2 bedrooms, one with dressing room, 2 shower rooms. Cellar.

The apartment offers all modern comforts: air conditioning, solar panels, double flow system, heat pump, triple glazing, etc. Exceptional finishes: built-in cupboards, oak flooring, etc.! PEB B. Available immediately. For further information, please contact us on 02 / 420 65 01.

## Essential info

<b>Reference</b>	6626144
<b>Type</b>	Flat
<b>Ground surface</b>	324m <sup>2</sup>
<b>Living surface</b>	94m <sup>2</sup>
<b>Terrace surface</b>	23m <sup>2</sup>
<b>Year of construction</b>	1920
<b>Year of renovation</b>	2024
<b>Availability</b>	At the contract

## Required info

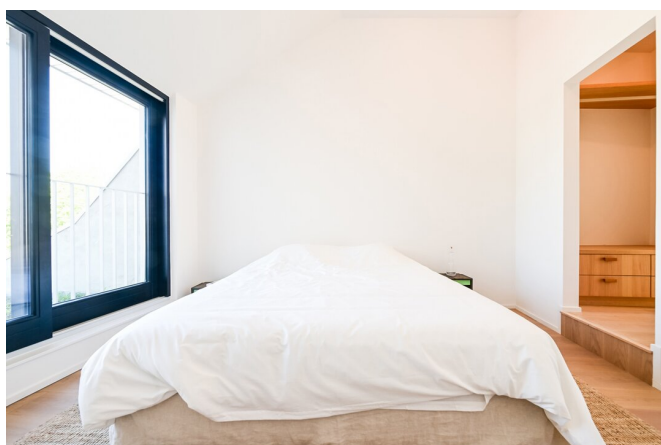
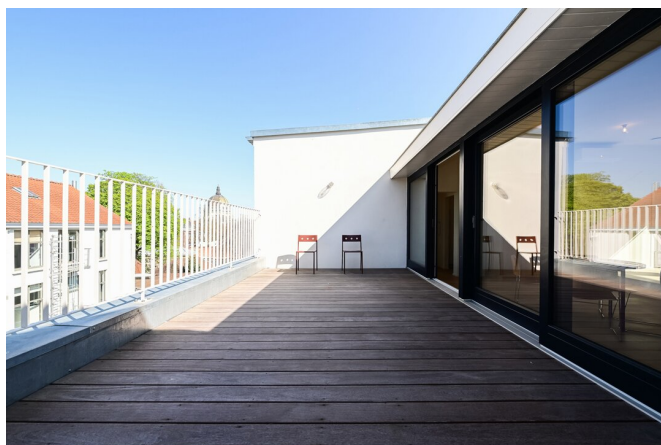
<b>EPC Value</b>	84
<b>EPC Label</b>	B
<b>Urban planning destination</b>	Living zone
<b>Urban planning permit</b>	Yes
<b>Subdivision permit</b>	Yes
<b>Summons</b>	No
<b>Court decision</b>	No
<b>Right to sell</b>	No
<b>O-Level</b>	Not located in flood area

## Layout

**Toilets** 1

# FIERCE

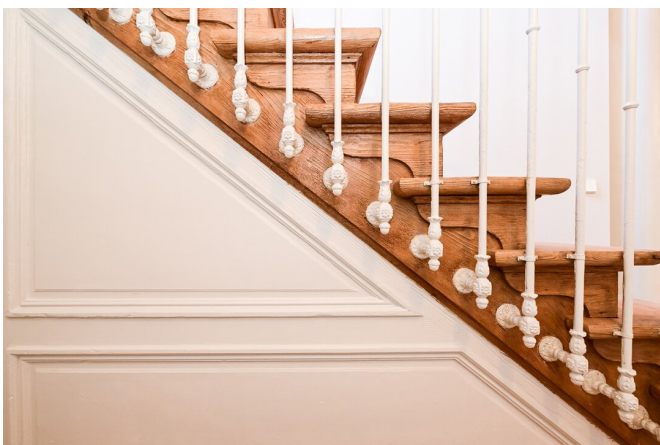
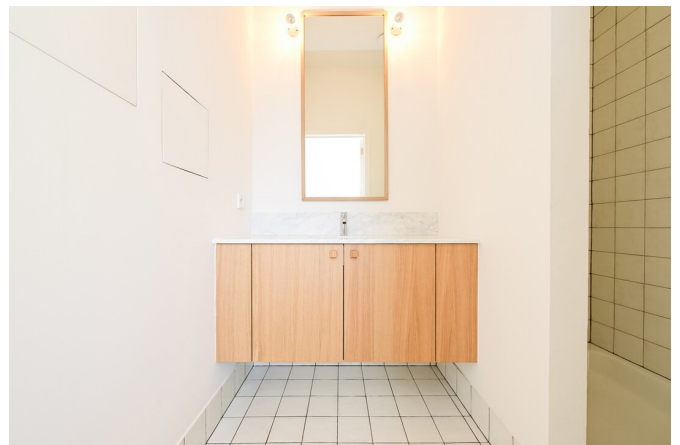
I M M O





# FIERCE

I M M O



# FIERCE

I M M O



## Interested in this estate?

Contact us for more information



### Michaël Baert

Responsible New constructions - IPI 512.639

- T. +32 472 46 93 44
- E. [michael@fierceimmo.com](mailto:michael@fierceimmo.com)

# FIERCE

I M M O