



Bulk sale of 16 parking spaces - OPPORTUNITY

Chaussée d'Etterbeek 64, 1040 Etterbeek

Reference

6654277

Price

€ 280.000

Living surface

15m²

Garages

1

Description

SCHUMAN - Just a stone's throw from Berlaymont, in the heart of the European Quarter, we present these 16 secure parking spaces for sale. Currently leased for 121 euro/month/parking VAT included. You can terminate the contract and rent on your own, or offer peace of mind to your employees who drive to the office. It's a safe, hassle-free investment.

Essential info

Reference	6654277
Type	Garage / parking
Living surface	15m ²
Year of construction	2017
Availability	At the contract

Required info

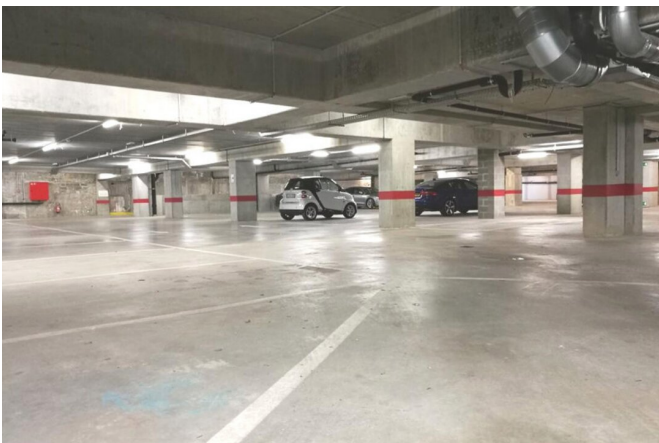
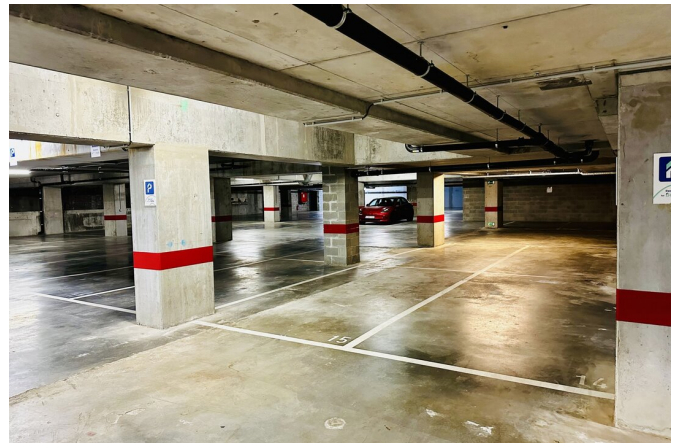
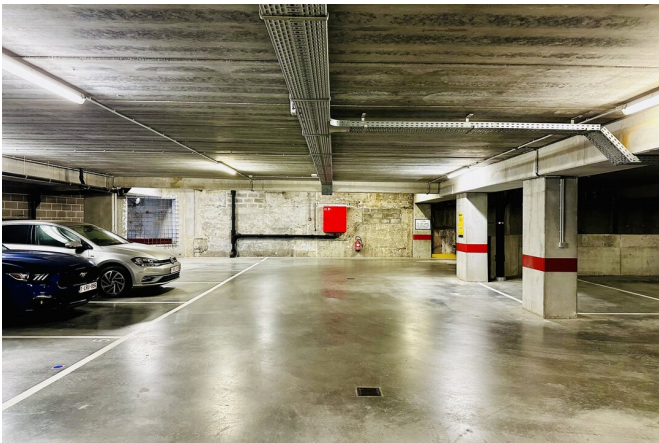
Urban planning destination	Unknown
Urban planning permit	Unknown
Subdivision permit	Unknown
Summons	No
Court decision	No
Right to sell	No
O-Level	Not located in flood area

Layout

Garages 1

FIERCE

I M M O



Interested in this estate?

Contact us for more information



Michaël Baert

Responsible New constructions - IPI 512.639

- T. +32 472 46 93 44
- E. michael@fierceimmo.com

FIERCE

I M M O