



EXCEPTIONAL FURNISHED PENTHOUSE 4 BED, 4 BATH, TERRACE + P

Avenue Yorkshire 22, 1200 Woluwe-Saint-Lambert

FIERCE

I M M O

Reference	6261334
Price	€ 1.090.000
Ground surface	5300m ²
Living surface	215m ²
Terrace surface	45m ²
Bedrooms	4
Bathrooms	4
Garages	1

Description

Ideally located in a sought-after area, this penthouse benefits from easy access to urban amenities, restaurants, shops and surrounding green spaces.

this magnificent luxury penthouse, offering an elegant and refined lifestyle in one of the most desirable areas of the city. With its 215m² spread over two floors and an exceptional terrace, this penthouse embodies the height of comfort and privilege.

This penthouse is arranged on two levels, offering a harmonious separation between living areas and private areas.

With a spacious and sunny terrace, offering breathtaking views of the surrounding area and the urban skyline. The bright and spacious living room, tastefully furnished and with large bay windows, providing an ideal setting for relaxing or hosting receptions.

A fully equipped kitchen with high-end appliances, ideal for preparing delicious meals while enjoying the views from the adjacent terrace.

Four elegant bedrooms, each lovingly furnished and with its own bathroom.

This penthouse is furnished with attention to detail and a strong aesthetic sense, creating an atmosphere of luxury and comfort.

Available for furnished rental, this penthouse offers the opportunity to settle in immediately and enjoy a high-end lifestyle.

Don't miss this unique opportunity to live in an exceptional penthouse, combining luxury, comfort and an urban lifestyle.

Contact us now on 02 420 65 01 to arrange a visit.

Essential info

Reference	6261334
Type	Flat
Ground surface	5300m ²
Living surface	215m ²
Terrace surface	45m ²
Year of construction	2017
Availability	Immediately
Elevator available	Yes

Required info

EPC Value	96
EPC Label	C
Urban planning destination	Unknown
Urban planning permit	Unknown
Subdivision permit	Unknown
Summons	Unknown
Court decision	Unknown
Right to sell	Unknown
O-Level	Not located in flood area

Layout

Toilets	2
Garages	1
Parking places	1

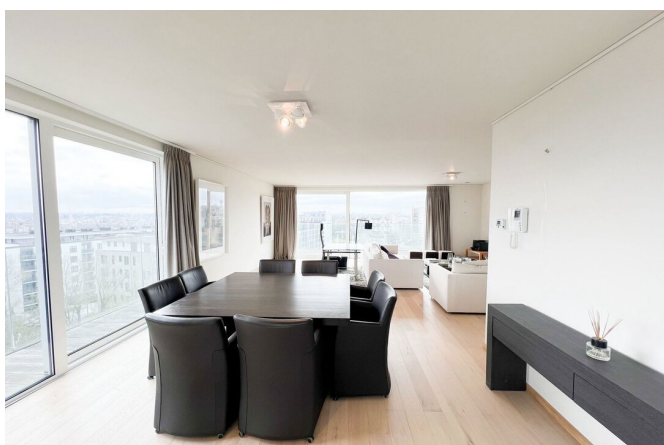
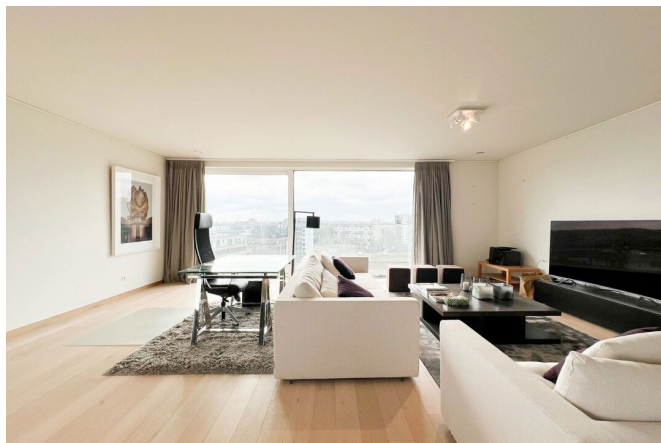
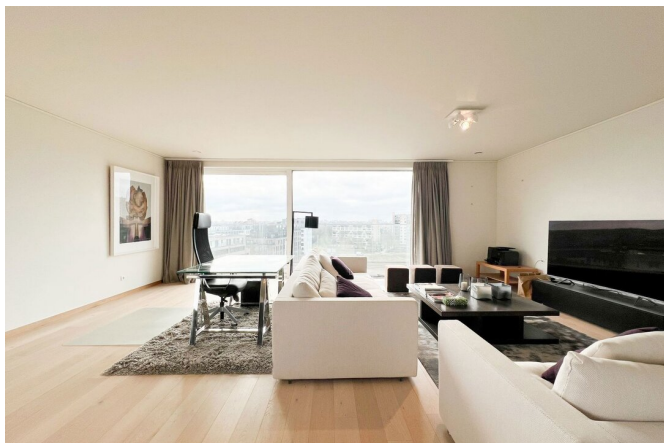
FIERCE

I M M O



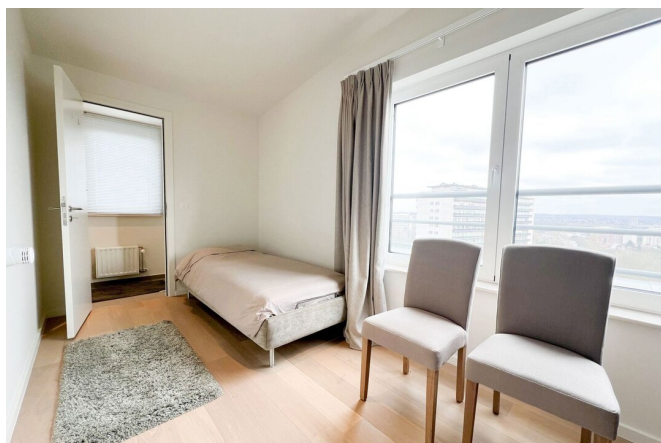
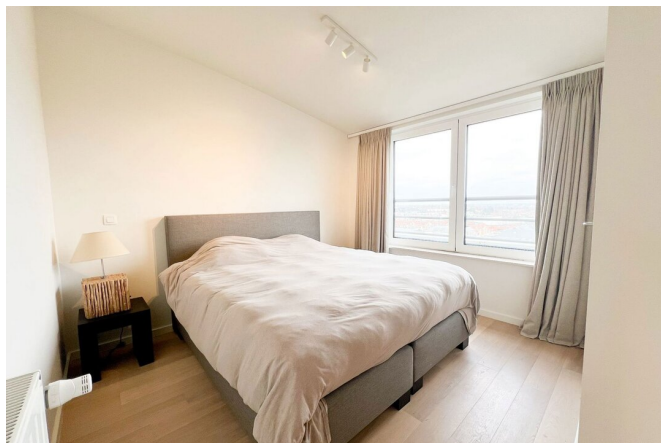
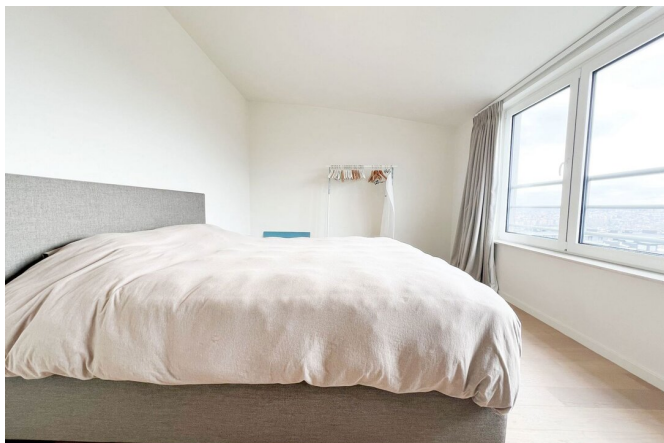
FIERCE

I M M O



FIERCE

I M M O



FIERCE

I M M O



Interested in this estate?

Contact us for more information



Noah Todaro

Conseiller immobilier | Ventes | Locations - IPI
800.066

- T. +32 492 40 78 05
- E. noah@fierceimmo.com

FIERCE

I M M O